

Meet the Team!



Trish Flores

Director of
Bilingual/ESL
& Pre-K

pflores@bisdtx.org



**Dr. Tina
Lozano**

Bilingual/ESL
Program
Coordinator

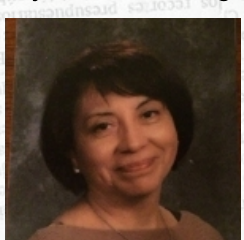
alozano@bisdtx.org



Yadira Avila

PK-1 EL
Instructional
Specialist

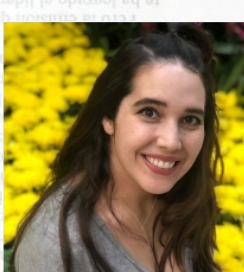
yavila@bisdtx.org



**Silvia
Whitaker**

2-4 EL
Instructional
Specialist

swhitaker@bisdtx.org



**Maria
Wagoner
Benjamin**

5-8 EL
Instructional
Specialist

mwagoner@bisdtx.org

What we do

The BISD English learner department is committed to supporting teachers in their work with ELs. We do this in a variety of ways such as:

- Coaching
- Providing professional development
- Providing resources and assisting campuses in budget activities
- Providing parent literacy trainings
- Supporting teachers in their work with newcomers

Upcoming Trainings

- **October 29:** BIG 8 Champion High School
- **October 21:** 2nd-4th Bilingual Teacher Training
- **October 28:** Prek-1st Bilingual Teacher Training
- **October 29:** Bilingual Exception Teacher Training
- **November 11:** PreK-1st Bilingual Teacher Training
- **November 18:** 2nd-4th Bilingual Teacher Training
- **November 13:** BIG 8 Champion Middle School
- **November 19:** BIG 8 Champion High School
- **November 19:** Bilingual Exception Training
- **December 11:** BIG 8 Champion Middle School

Contact

Erica Figueroa, Administrative Assistant
512-772-7100 efigueroa@bisdtx.org

Bilingual Digest

PK-1 students receive instruction in the Language of the day (LOD) which provides a consistent program from grade to grade and school to school.

Teachers adhere to the fidelity of the language through all interactions and all subjects

The following instructional practices are used in the PK-1 classrooms:

- Review-View-Preview instructional practice in the Language of the Day
- Daily word study in both languages
- Sheltered Instruction in both languages

2-4 grade students gradually transition into English by content instruction through the following language instructional practices:

- Preview-View-Review in every lesson
- Bridge language through content and include
 - Metalinguistic Charts
- Sheltered Instruction in every lesson every day such as: Explicit vocabulary instruction
- Structured conversations
- Rich print Environment
- Students working in cooperative groups

ESL Digest

The goal of English as a Second Language (ESL) education in Bastrop ISD is for English learners to become English proficient. Competency in listening, speaking, reading, and writing in English is attained through the development of literacy and academic skills in English through sheltered instructional methods.

Bastrop ISD offers ESL content-based instruction for English Learners in grades Pre-Kindergarten through 6. ESL Pull-out instruction is offered for English Learners in grades 7 through 12.

For teachers in ALL content areas, it is imperative to make content comprehensible for EL students. The BISD EL team can assist you with this through the use of the BIG 8. Please reach out for questions, co-planning, co-teaching, modeling, and more!

Got Newcomers?

Consider providing a "Welcome Kit" with the following resources:

School information

- Teacher information: Classroom location and phone number
- Basic information about school's attendance policy, including phone numbers parents should call when their child will be absent
- Bussing information
- School website
- Lunch information
- Volunteer opportunities

It is very helpful if any of this information is available in the student's first language. If not, I recommend revising the standard school information handouts to simplify the English, make shorter sentences and add pictures for visual support. It is also helpful if the most important information, such as the teacher name and school number is printed on bright cardstock that can be easily located in the packet. If time is available a staff member should go through the packet with the family and explain the items. Calling in to the school when their child is sick is very important and may be a new concept, so offering a sample dialogue of what to say when they call will be helpful.

School calendar

The calendar can be adapted for new ELL families by placing bright circle dots on the most important days such as school release days and conferences.

Need help assessing your new arrivals? Check out our flowchart at <http://bit.ly/NewcomerToDo>

source: colorincolorado.org

What would you like to see next?

<http://bit.ly/NextUpELs>